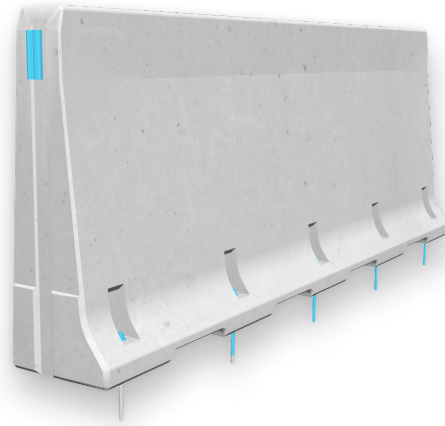


REBLOC 157FAU_4.11_5A

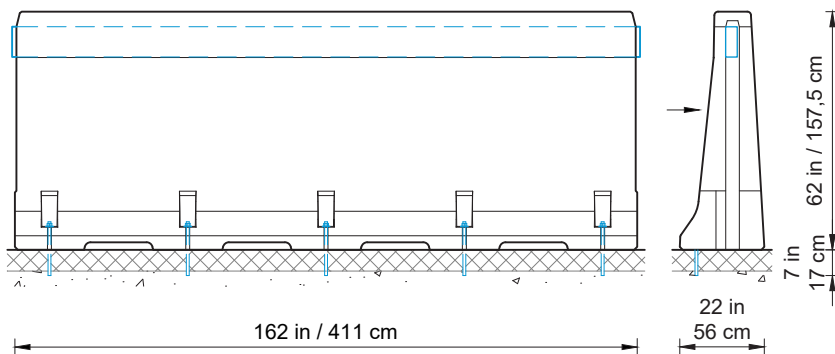
Technical Datasheet

**Precast Concrete
Vehicle Restraint System****Permanent System
Anchored**

REBLOC 157FAU-4.11-5A

Technical data

Test level	TL5	TL3
Working width	47.2 in (1.2 m)	26.4 in (0.7 m)
Dynamic deflection	13.8 in (0.4 m)	4.3 in (0.1 m)
Installation	anchored in asphalt concrete (per element 5x adhesive anchor Ø 3/4")	
Application	single-sided	
Minimum installation length	121 ft (37 m; 9 elements)	
Initial/end anchorage	not necessary, optional available	
Dimensions L x W x H	162 x 22 x 62 in (411 x 56 x 157.5 cm)	
Weight/element	approx. 11442 lb (5190 kg)	
Curve radius	r ≥ 197 ft (60 m) outside of the curve r ≥ 295 ft (90 m) inside of the curve	
Coupling/exposed steel parts	fully integrated, exposed parts hot-dip galvanized	



all dimensions in cm